



REF: # 8859

ALBIR

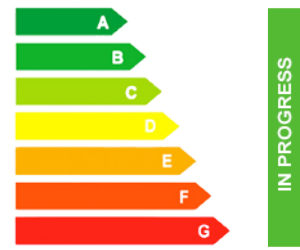


INFO	
:	1.390.000 €
:	
:	Albir
:	3
:	3
(m2):	339
(m2):	480
(m2):	-
:	
:	-
:	-



This exclusive modern design villa in Playa de Albir, Alfàs del Pi, Costa Blanca, is a newly built home that combines luxury, comfort and an unbeatable location, just a 15minute walk from the beach, with delivery scheduled for December 2024. The property has a constructed area of 339 m² on a plot of 480 m², with a Mediterranean garden and a heated swimming pool. On the ground floor, an open space that combines a living room, dining room and kitchen with large windows and a double height that fills the entire house with natural light, connecting the interiors with the exteriors through interior patios, as well as including a garage with direct access to the house. On the first floor there are 3 ensuite bedrooms with access to a private terrace and a spectacular solarium with views of Puig Campana, the Sierra Bernia and the Sierra Helada. The semibasement floor offers 90 m² of customizable space for a gym, games room or more bedrooms. Among the outstanding features are underfloor heating, hotcold air conditioning , home automation system and alarm, as well as top quality finishes. This villa offers a privileged environment with contemporary design and all the necessary amenities

for maximum comfort. Contact us for more information or to arrange a viewing and discover your new luxury home!















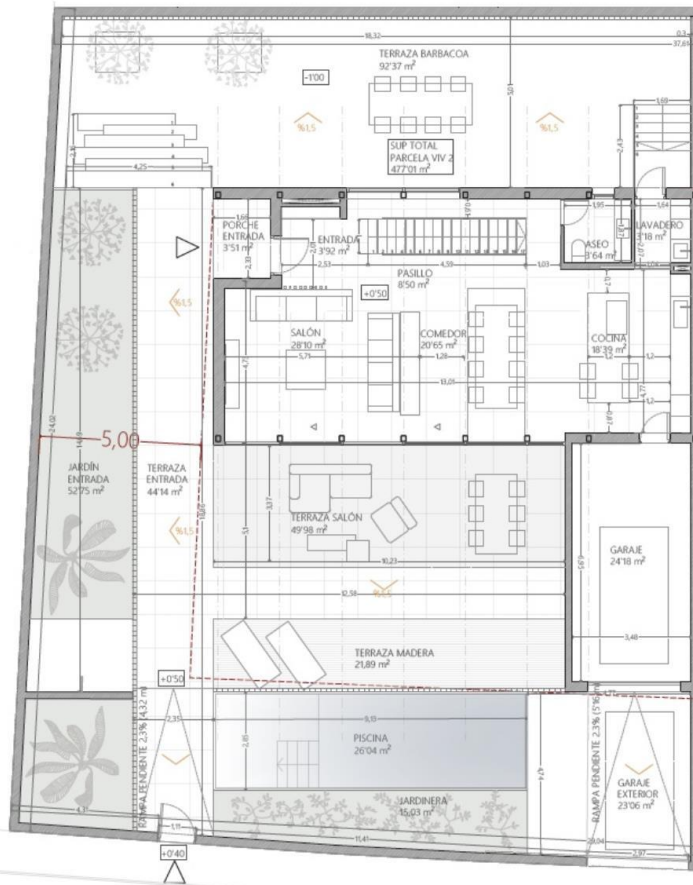




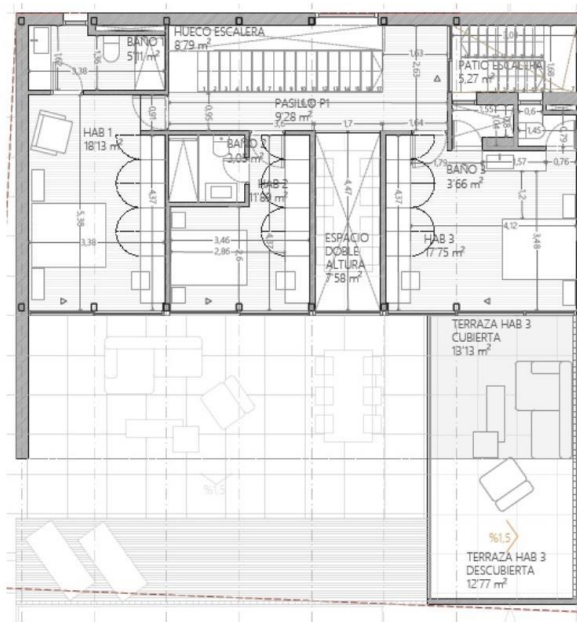








VIVIENDA 2	
Estancia	Sup útiles
Planta Baja	
EXTERIOR	
Terraza salón	49.98 m ²
Terraza piscina madera	21.89 m ²
Caraje exterior	23.06 m ²
Terraza BBQ -1	92.37 m ²
Terraza Pisable entrada	44.14 m ²
TOTAL ÚTIL:	231.44 m²
INTERIOR	
Cocina	18.39 m ²
Aseo	3.64 m ²
Circulaciones PB	8.50 m ²
Comedor	20.65 m ²
Salón	28.10 m ²
Hall	3.92 m ²
Recibidor	3.51 m ²
Lavadero	3.18 m ²
Caraje	23.15 m ²
TOTAL ÚTIL:	113.03 m²



VIVIENDA 2	
Estancia	Superficies útiles
Planta Primera	
EXTERIOR	
Terraza garaje cubierta	13,13 m ²
Terraza garaje descubierta	12,79 m ²
Patio escalera acceso solárium	5,27 m ²
TOTAL ÚTIL:	31,19 m²
INTERIOR	
Pasillo P1	9,28 m ²
Dormitorio 1	18,13 m ²
Baño 1	5,11 m ²
Dormitorio 2	11,89 m ²
Baño 2	3,05 m ²
Dormitorio 3	17,75 m ²
Baño 3	3,66 m ²
Doble altura escalera	3,38 m ²
Doble altura comedor	7,58 m ²
TOTAL ÚTIL:	79,83 m²

Image not found

<https://www.cmsinmo.com/imagenes/uploads/inmu/4/8859/158859.jpg>

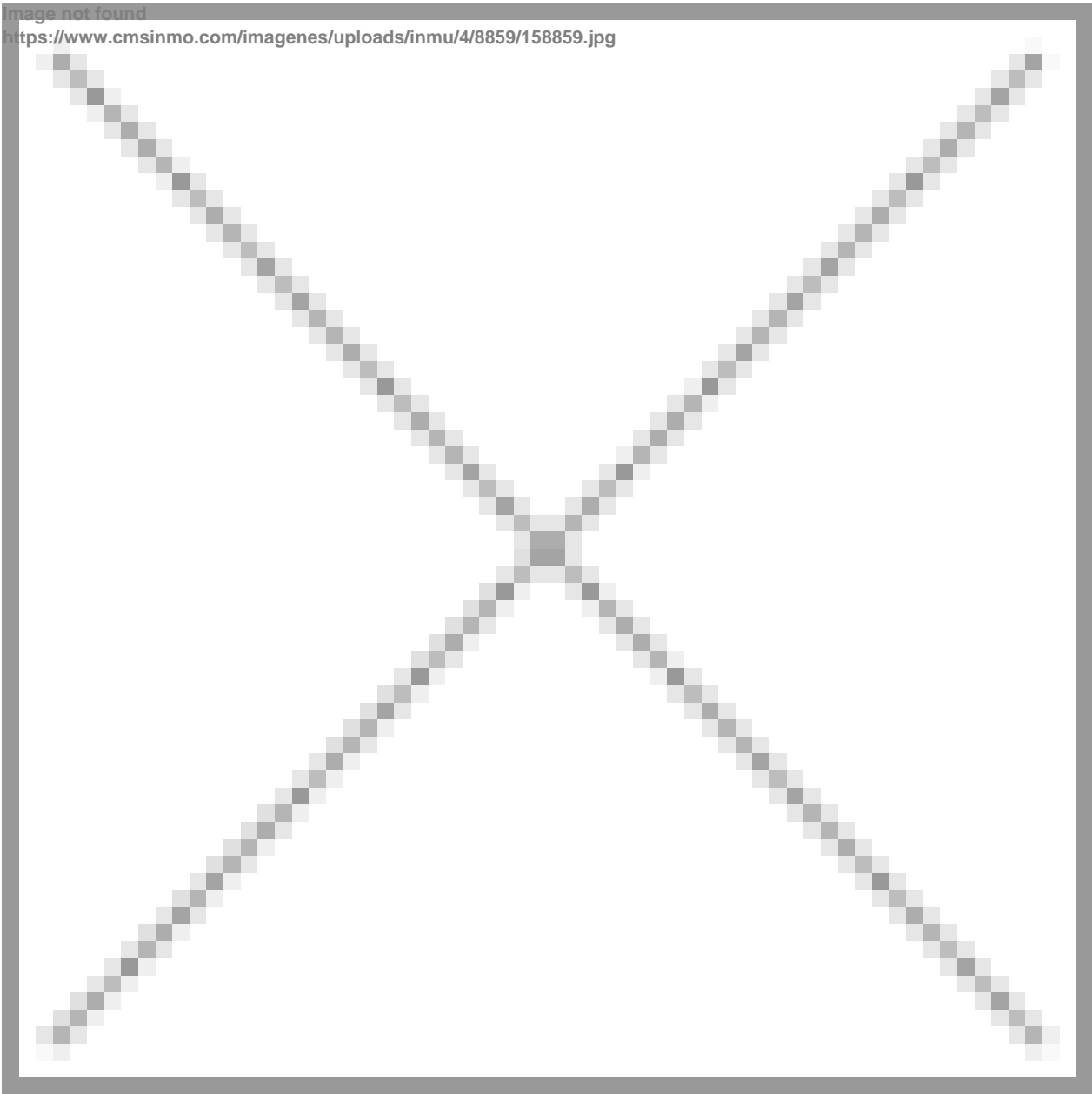


Image not found

<https://www.cmsinmo.com/imagenes/uploads/inmu/4/8859/168859.jpg>

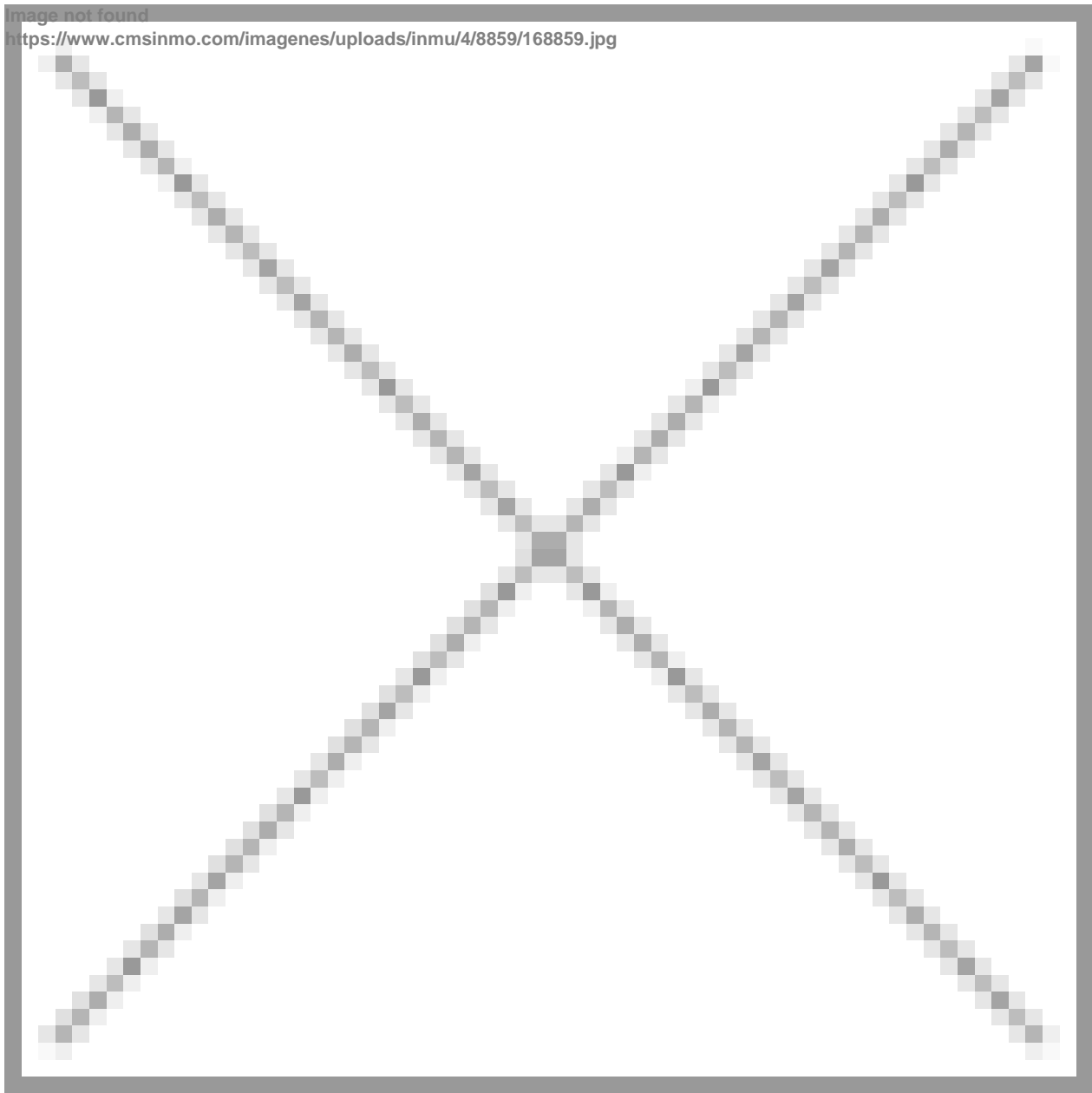


Image not found

<https://www.cmsinmo.com/imagenes/uploads/inmu/4/8859/178859.jpg>

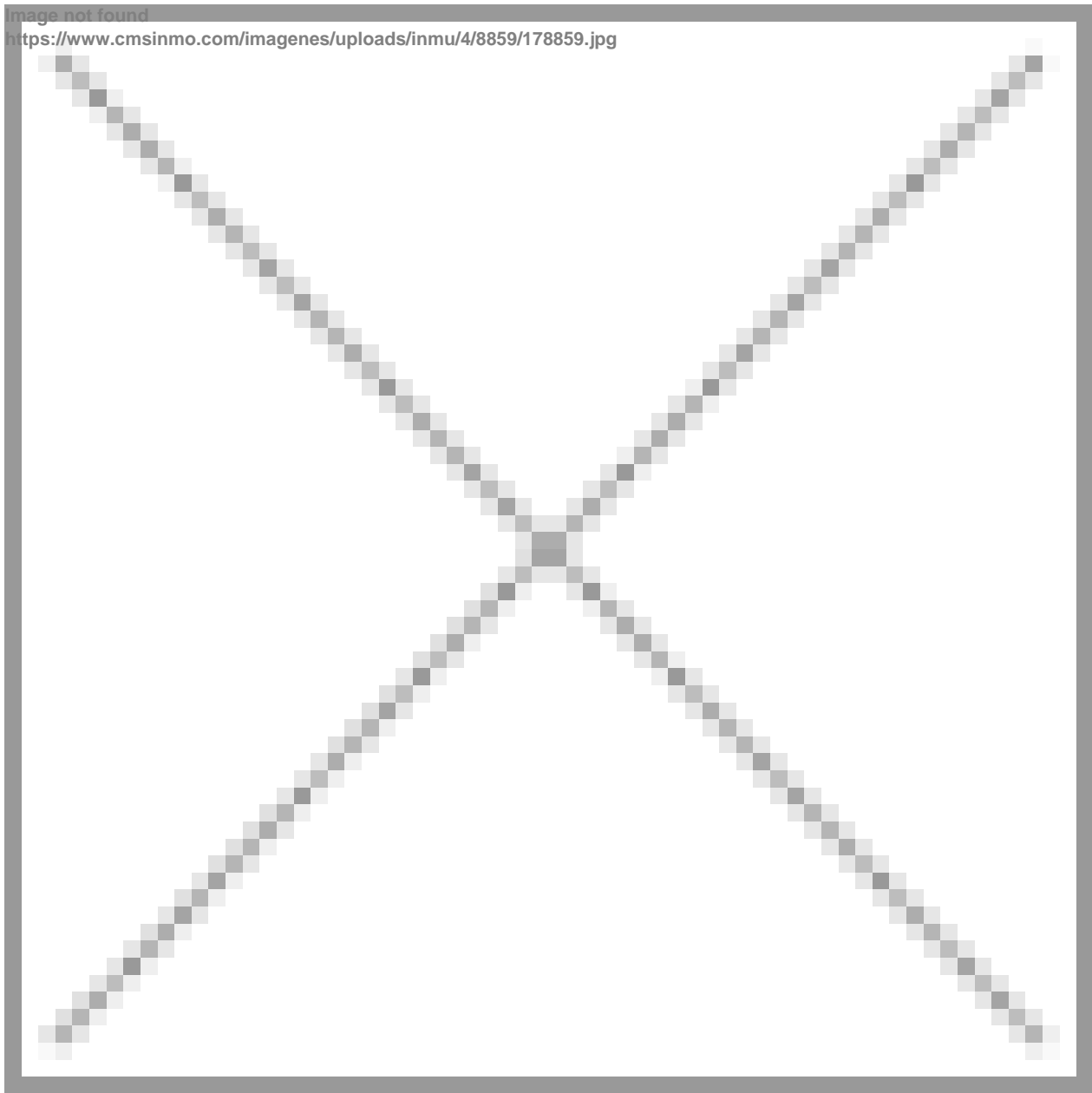


Image not found

<https://www.cmsinmo.com/imagenes/uploads/inmu/4/8859/188859.jpg>

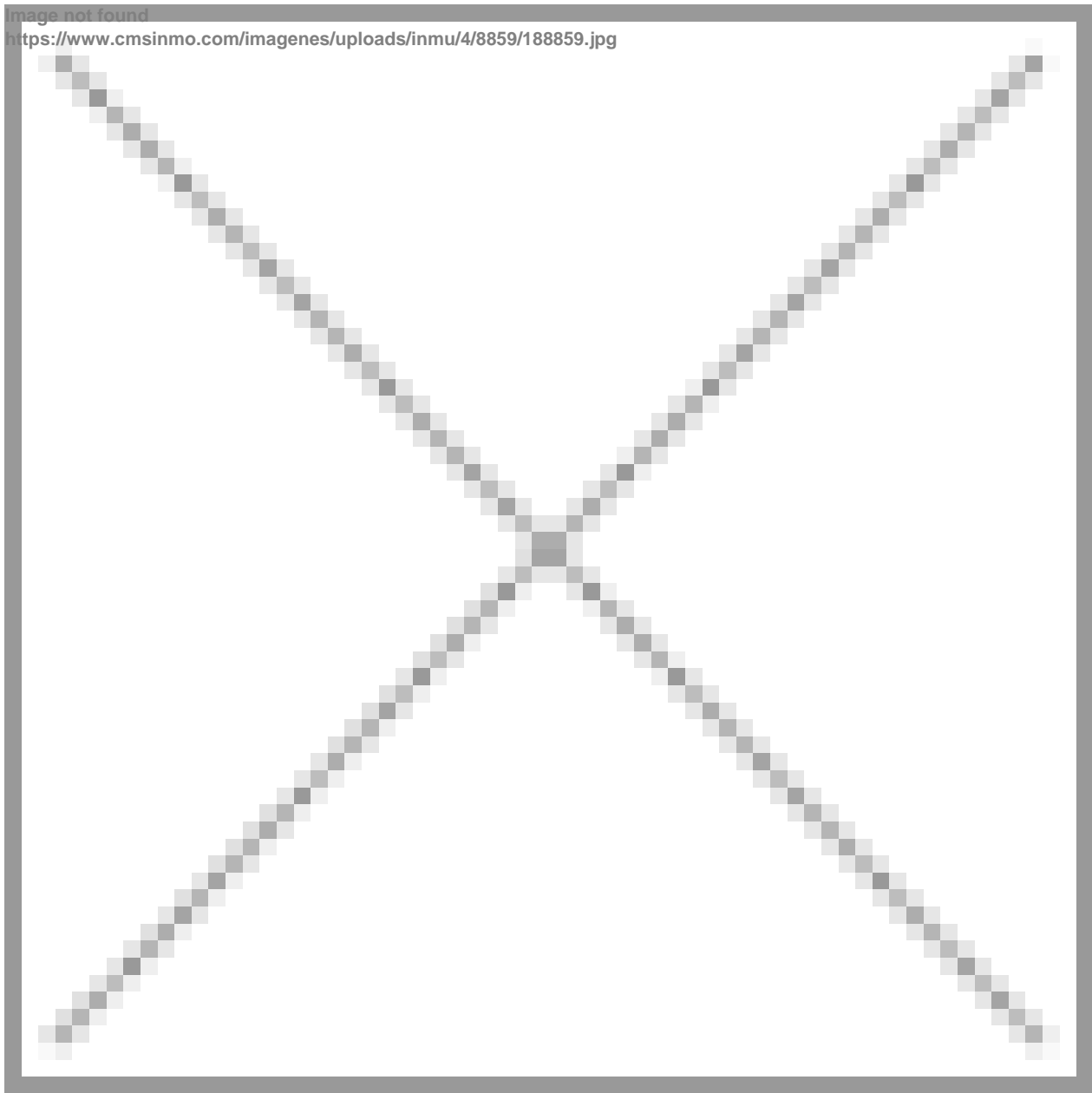


Image type unknown

<https://www.cmsinmo.com/imagenes/uploads/inmu/4/8859/198859.jpg>



"OUR EXPERIENCE IS YOUR GUARANTEE"