



REF: # 12244

ROJALES (BENIMAR)



INFO	
:	355.900 €
:	
:	Rojales (Benimar)
:	3
:	2
(m2):	113
(m2):	124
(m2):	31
:	
:	-
:	-



NEW BUILD TOWNHOUSES IN ROJALES New Build modern residential of townhouses and semi-detached villas in Rojales. Properties has 3 bedrooms, 2 bathrooms, guest toilet, open plan kitchen with living area and direct access to the terrace, private garden with the parking space. An options for a solarium and a private pool at an extra cost. Rojales it is a lovely village with all services such as supermarkets, pharmacies, banks, restaurants and natural park located very close by. There a 3 golf courses nearby and the blue flag beaches are just a short 10 minute drive away, as well as water parks in nearby Rojales and Torrevieja. Alicante & Murcia airports are 45 minutes drive away.



•

•

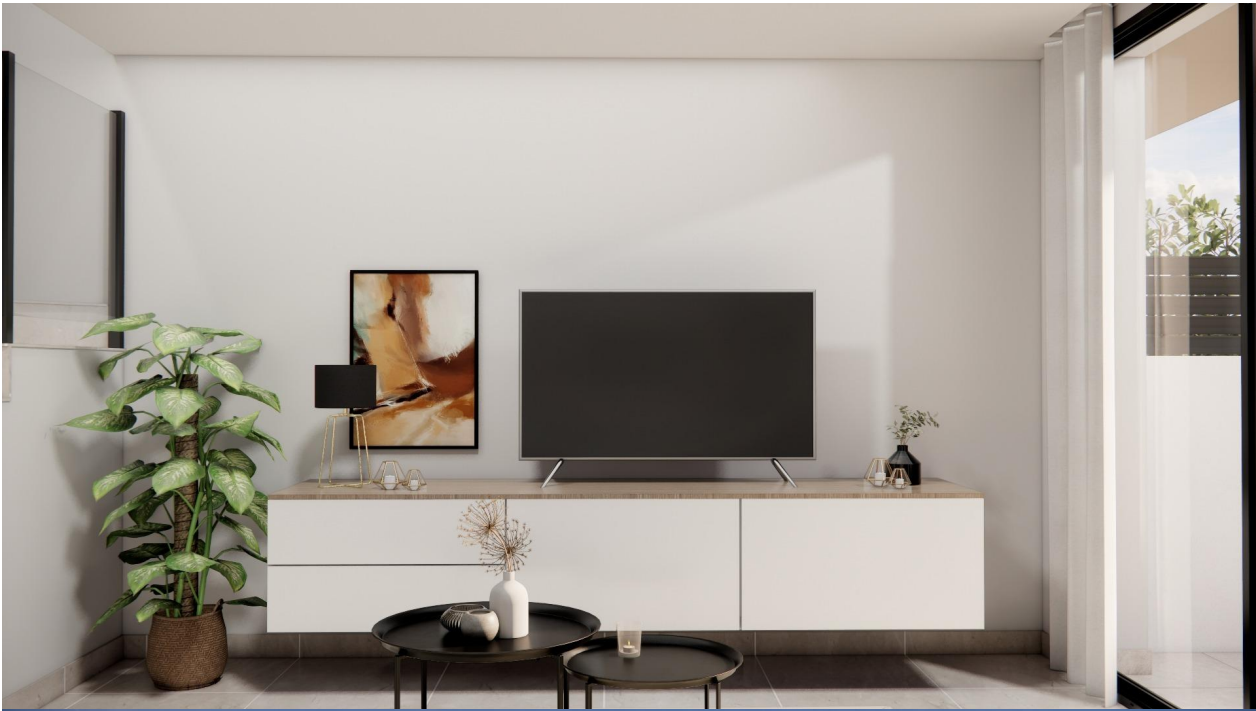
PROPERTY GALLERY









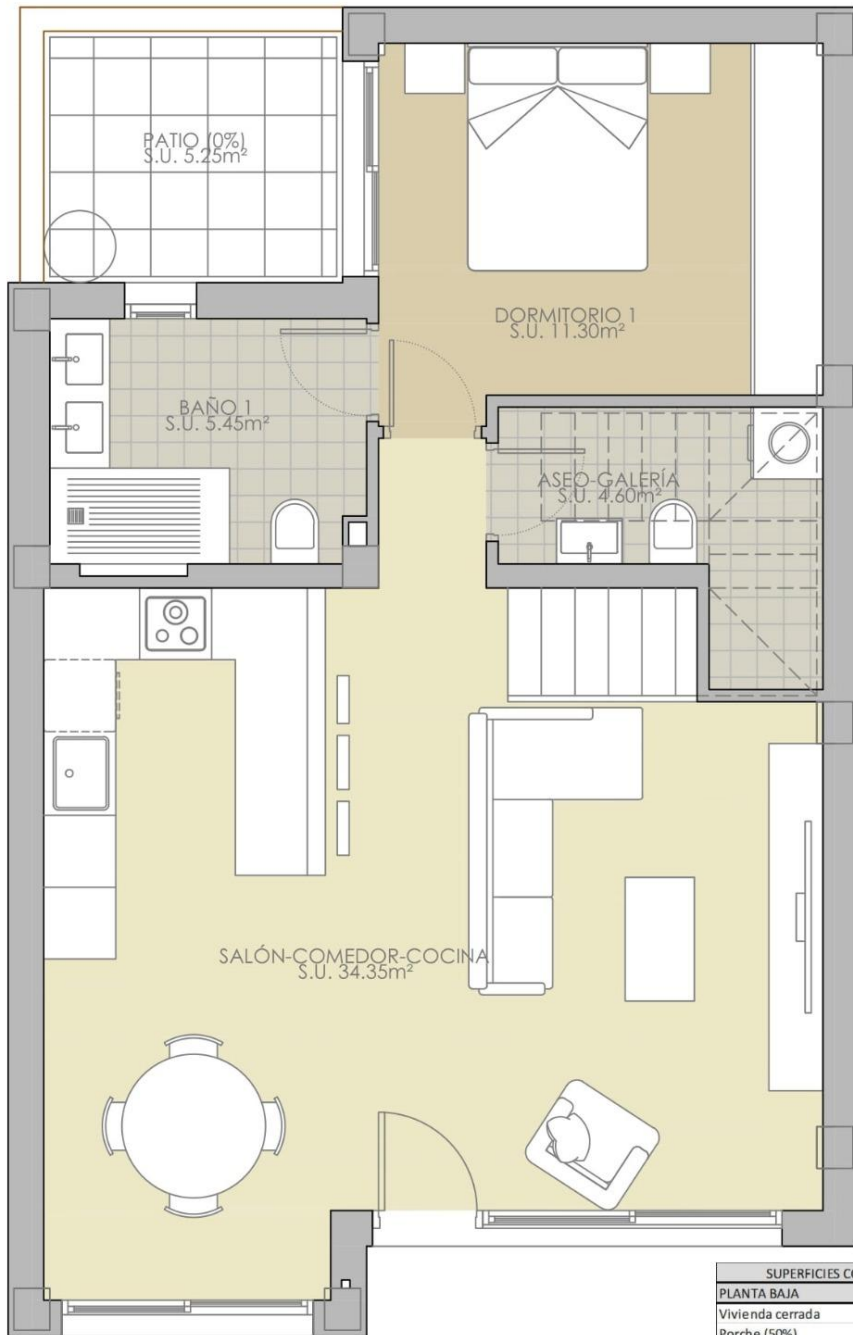




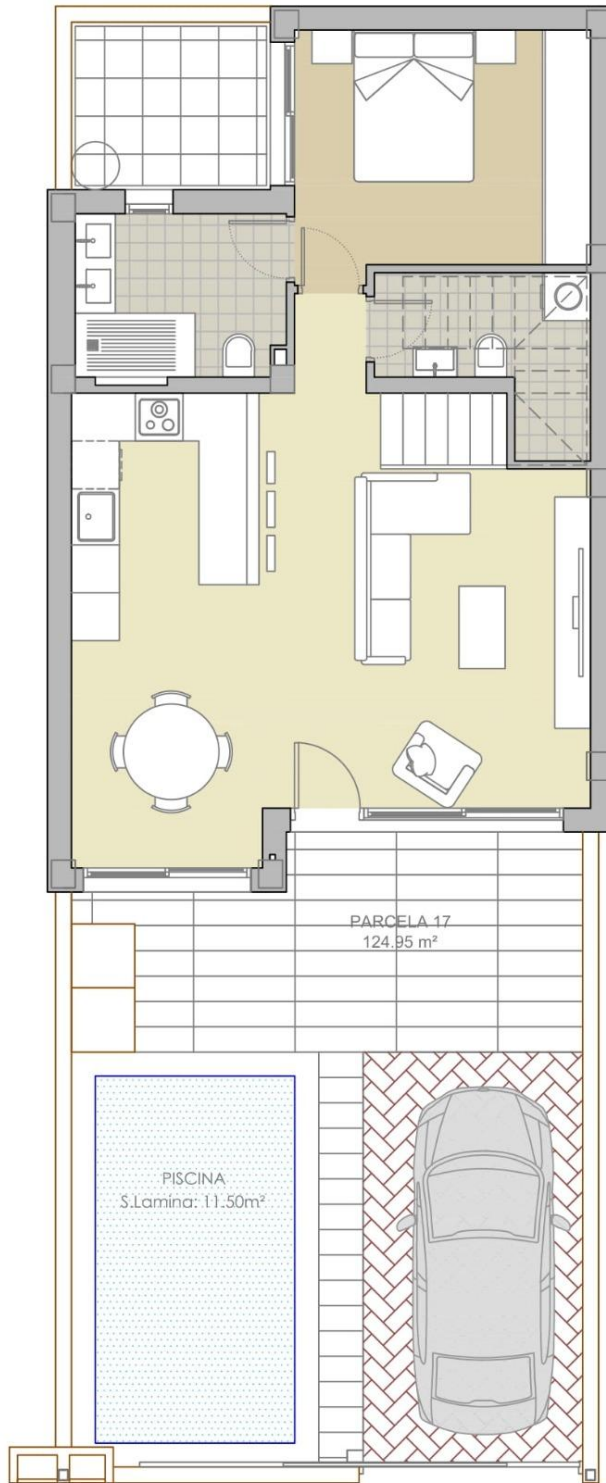








SUPERFICIES CONSTRUIDAS TOTALES	
PLANTA BAJA	
Vivienda cerrada	65,50 m ²
Porche (50%)	5,65 m ²
Patio (0%)	5,25 m ²
PLANTA PISO	
Vivienda cerrada	42,50 m ²
Terraza descubierta (0%)	26,80 m ²
PLANTA CUBIERTA	
Solarium (0%)	39,00 m ²
Escalera ext. (0%)	4,45 m ²
TOTAL	113,65 m²



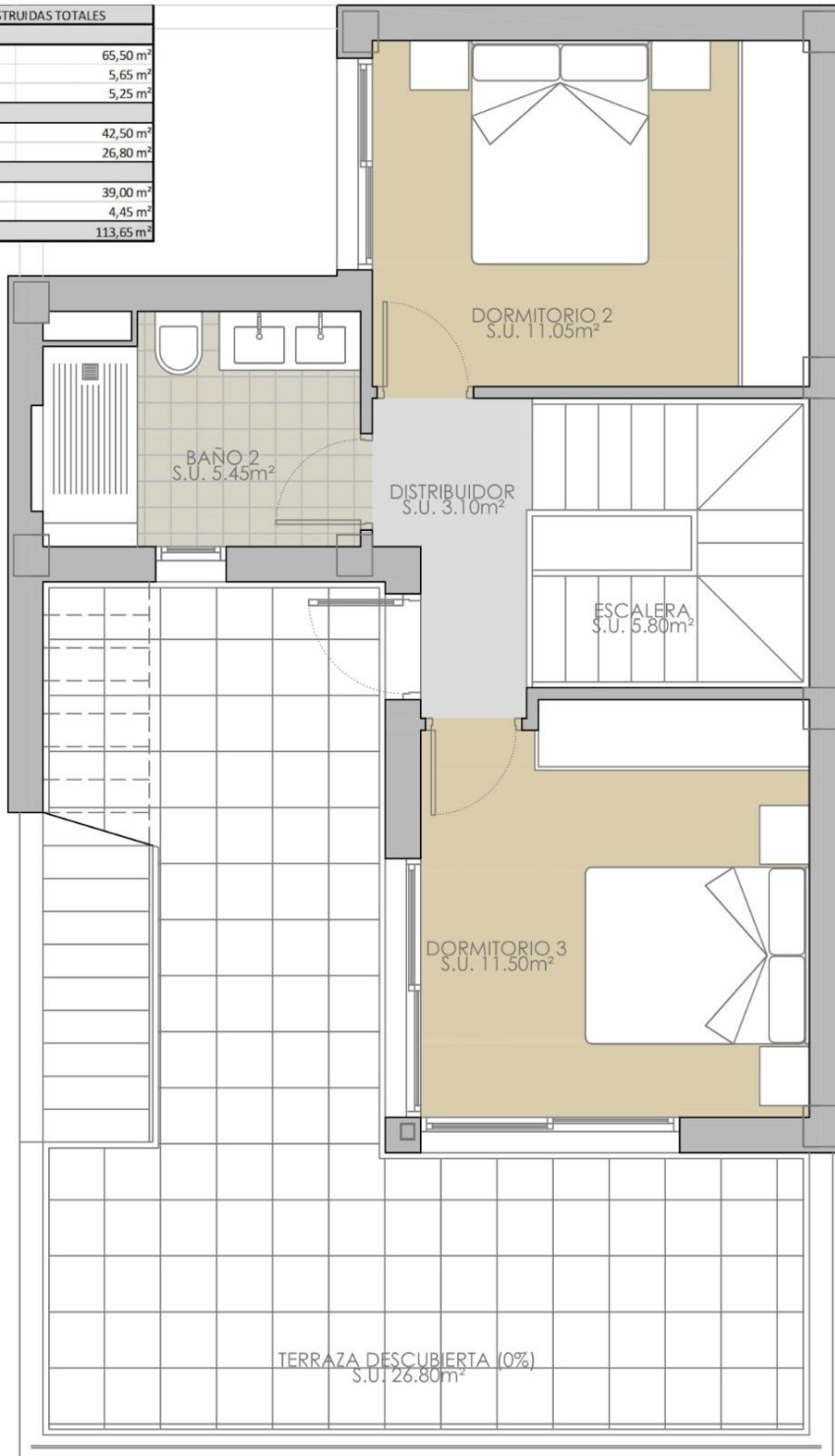
7 VIVIENDAS ADOSADAS CON PISCINA

"PLANOS DE VENTA SIN VALOR CONTRACTUAL"

PARCELA 17

SITUACION:	
C/ DOÑA MARÍA SATORRE 03170 - ROJALES (ALICANTE)	
PROMOTOR :	
PROYECTOS ALBA SALINA, S.L.	
FECHA	ESCALA
JUNIO 2024	1/75

SUPERFICIES CONSTRUIDAS TOTALES	
PLANTA BAJA	
Vivienda cerrada	65,50 m ²
Porche (50%)	5,65 m ²
Patio (0%)	5,25 m ²
PLANTA PISO	
Vivienda cerrada	42,50 m ²
Terraza descubierta (0%)	26,80 m ²
PLANTA CUBIERTA	
Solarium (0%)	39,00 m ²
Escalera ext. (0%)	4,45 m ²
TOTAL	113,65 m²



"OUR EXPERIENCE IS YOUR GUARANTEE"