



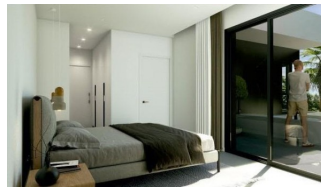
REF: # 12207

ROJALES (BENIMAR)

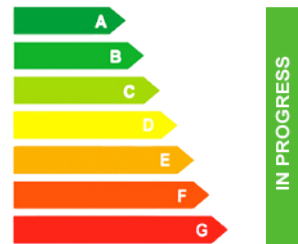


INFO

| | |
|---------|-------------------|
| : | 560.000 € |
| : | |
| : | Rojales (Benimar) |
| : | 3 |
| : | 3 |
| (m2): | 136 |
| (m2): | 319 |
| (m2): | 49 |
| : | |
| : | - |
| : | - |



NEW BUILD VILLAS IN ROJALES New Build exclusive development of villas in Rojales. Beautiful villas build over 2 floors with 3 bedrooms, 3 bathrooms, open plan kitchen with lounge area and terrace. Villas build on independent plots where you have garden with private pool and parking space. An options for a solarium at an extra cost. There a 3 golf courses nearby and the blue flag beaches are just a short 10 minute drive away. Rojales it is a lovely village with all services such as supermarkets, pharmacies, banks, restaurants and natural park located very close to the villas. There are several golf courses close by as well as water parks in nearby Rojales and Torrevieja. Alicante & Murcia airports are 45 minutes drive away.



•

•



3 BEDROOMS





Interior view

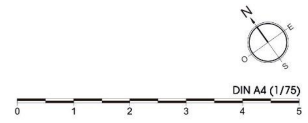


Superficie Construida Planta Baja 90.45 m²
 Superficie Construida Planta Piso 45.80 m²
 Superficie Construida TOTAL 136.25 m²
 Superficie Terraza Planta Piso 22.90 m²

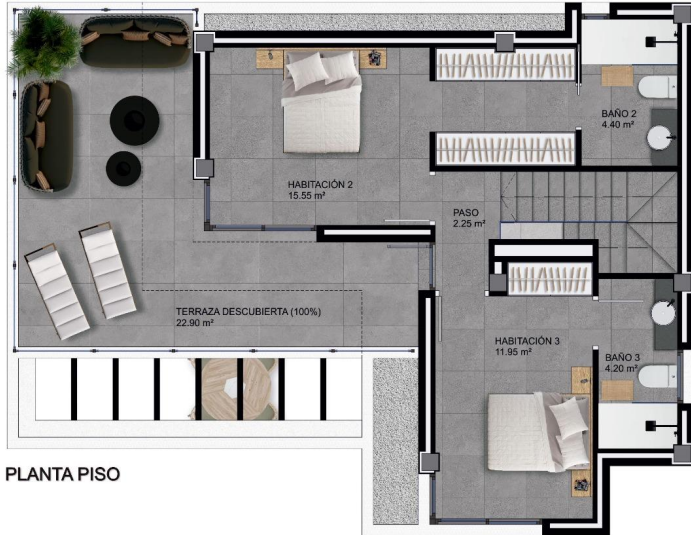


PLANTA BAJA

LAS IMÁGENES SE REFIEREN A SOLUCIONES APROXIMADAS Y NO SON VINCULANTES AL PROYECTO FINAL

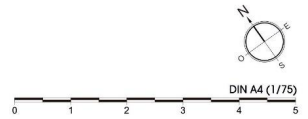


Superficie Construida Planta Baja 90.45 m²
 Superficie Construida Planta Piso 45.80 m²
 Superficie Construida TOTAL 136.25 m²
 Superficie Terraza Planta Piso 22.90 m²



PLANTA PISO

LAS IMÁGENES SE REFIEREN A SOLUCIONES APROXIMADAS Y NO SON VINCULANTES AL PROYECTO FINAL



Superficie Construida Planta Baja 90.45 m²
 Superficie Construida Planta Piso 45.80 m²
 Superficie Construida TOTAL 136.25 m²
 Superficie Terraza Planta Piso 22.90 m²
 Superficie Solarium 37.80 m²



SOLARIUM

LAS IMÁGENES SE REFIEREN A SOLUCIONES APROXIMADAS Y NO SON VINCULANTES AL PROYECTO FINAL



DIN A4 (1/75)



PLANTA BAJA GENERAL



- Parcela 01 364.25 m²
- Parcela 02 318.45 m²
- Parcela 03 319.30 m²
- Parcela 04 318.50 m²
- Parcela 05 295.15 m²
- Parcela 06 285.95 m²
- Parcela 07 293.50 m²
- Parcela 08 296.60 m²
- Parcela 09 304.85 m²



LAS IMÁGENES SE REFIEREN A SOLUCIONES APROXIMADAS Y NO SON VINCULANTES AL PROYECTO FINAL









"OUR EXPERIENCE IS YOUR GUARANTEE"