



REF: # 10992

ORIHUELA COSTA (EL BARRANCO)

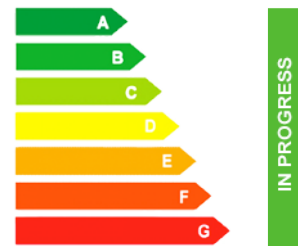


INFO	
:	450.000 €
:	
:	Orihuela Costa (El Barranco)
:	2
:	2
(m2):	103
(m2):	-
(m2):	82
:	
:	1
:	-



NEW BUILD EXCLUSIVE PENTHOUSE APARTMENT IN VILLAMARTIN AREA - lovely communal facilities and close to all amenities! This 103m2 Penthouse apartment consists of 2 spacious bedrooms with fitted wardrobes, 2 bathrooms, open plan kitchen and the living room, laundry room, 20m2 private terrace and a large 62m2 private solarium. This residential complex offers a large communal swimming pool, green areas, sauna, children's playground and gym! Located in the privileged area of Villamartin, in an excellent position close to shops, sports centres, schools, golf courses and some of the most beautiful beaches in the region! The properties are delivered with white goods, LED lighting package, underfloor heating and shower screens in bathrooms, ducted A/C installed, Legrand smart home system installed, aerothermal system for hot water, motorized blinds and private parking space. Villamartin offers a wide range of services, it has been a golf tourist attraction for over 40 years therefore as expected from a residential complex of this standard all the services are fully developed and built around one of the most prestigious golf courses on the Costa Blanca "Villamartin Golf Club". There is a very well-known commercial centre "Villamartin Plaza" along with many restaurants, fashion shops, supermarkets, banks, pharmacies, a high standard international school

“El Limonar” and the largest shopping centre in the Alicante region “La Zenia Boulevard! “. Home to some of the most beautiful beaches on the Costa Blanca just 3km away the area has a Cosmopolitan and International community and is known to have one of the healthiest climates in the world. Just a short distance away are 3 other golf courses Las Ramblas, Campoamor and Las Colinas. However, it is not only a golfers paradise, you can also find a large range of activities and entertainment for all the family; water parks in Torrevieja and Ciudad Quesada, open weekly markets, cinemas etc. Villamartín is approximately 50 minutes from Alicante International and Murcia Corvera airports.



:

:

: Km

:

: •

EXTRA

•

•







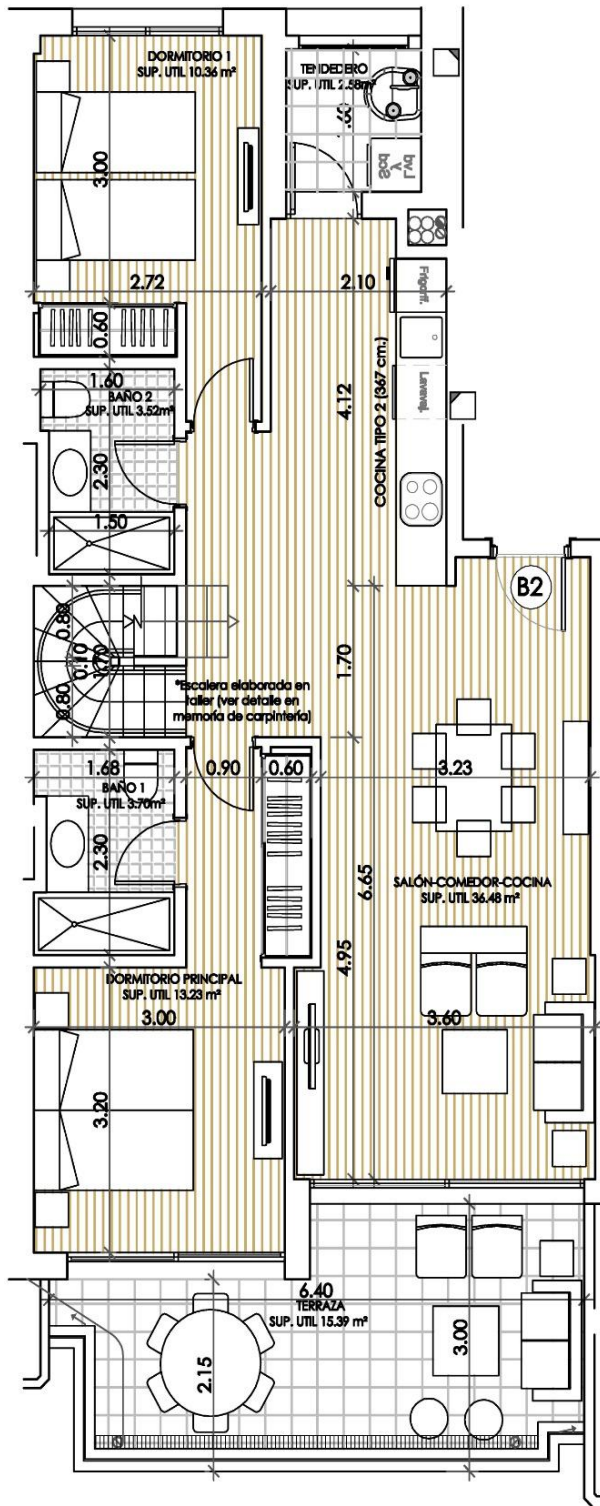


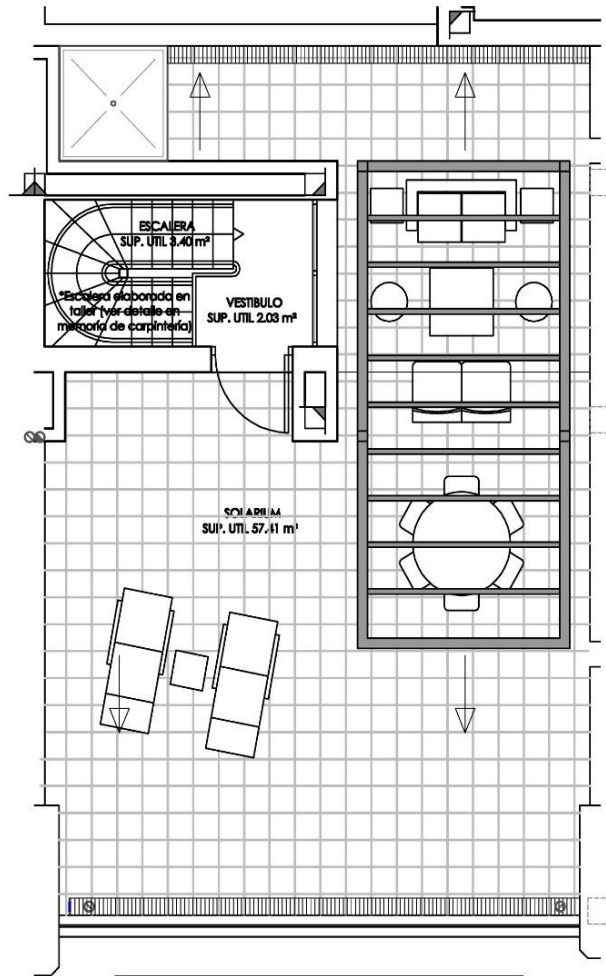












TIPO / TYPE	B2
PLANTA BAJA / GROUND FLOOR	Nº
SUP. CONSTRUIDA INTERIOR BUILT INTERIOR AREA	103.02 m ²
TERRAZA/TERRACE AREA	20.06 m ²
SOLARIUM	62.90 m ²
TOTAL	185.98 m ²

SUPERFICIES UTILES/FLOOR AREA	
DORMITORIO 1/BEDROOM 1	13.23 m ²
DORMITORIO 2/BEDROOM 2	10.36 m ²
BAÑO 1/BATHROOM 1	3.70 m ²
BAÑO 2/BATHROOM 2	3.52 m ²
SALON-COCINA/LIVING ROOM-KITCHEN	36.48 m ²
GALERIA/LAUNDRY ROOM	2.58 m ²
ESCALERA SUBIDA SOLARIUM/SOLARIUM STAIRS	3.40 m ²
VESTIBULO/LOBBY	2.03 m ²
TOTAL	75.30 m ²
TERRAZA/TERRACE	15.39 m ²
SOLARIUM	57.41 m ²
TOTAL	148.10 m ²



"OUR EXPERIENCE IS YOUR GUARANTEE"